



# Quick Start Guide Amphion A14-K

### Start Here:

Welcome! The ei<sup>3</sup> Amphion device is a reliably secure module that provides a private encrypted connection to the ei<sup>3</sup> cloud. In the following steps you will learn how to get an Amphion A14-K up and running!

### Amphion Placement:

Install the A14-K Amphion in a dry location with a temperature of -40 to 130 °F (-40 to 55 °C) for optimal performance. Ensure that the Amphion can easily be provided internet access with an Ethernet cable. A server room is usually an ideal location. Every A14 model Amphion has a DIN clip at the back to make it easy to mount onto DIN rails.

1

2

3

5

4

**Power the Amphion:**  
Connect to the power supply. Do **not** remove power before boot-up has completed. Boot-up has completed when the **Normal Boot-Up** pattern is displayed on the LEDs. See back of this page for LED details.



**Connect to the Internet:**  
Plug an Ethernet cable from port A to a router with Internet access.

**Connect to the Shop Floor LAN:**  
Plug an Ethernet cable from port B to a switch connected to the desired Amphion red box (A14-N).

**Amphion A14-K Specifications:**  
Power supply:  
Min. 10.7V, Max. 28.8V, Max. 10W  
Min Temp: -40 °C / -40 °F  
Max Temp: 55 °C / 130 °F  
Amphion must be stored in a cool, dry environment.

**Network:**  
Default Shop LAN IP - 192.168.100.10  
Outbound VPN connection requires TCP ports 443 and 80

**IMPORTANT NOTES:**  
See the other side of this document for details on LED patterns and meanings. If you have a poor internet connection, the Amphion configuration process may take longer than the estimates provided.  
  
Warranty of this product does not cover damage due to external causes, including but not limited to: accident, abuse, misuse, problems with electrical power, servicing not authorized by ei3, and usage not in accordance with product instructions.  
  
Software within this Amphion device is copyrighted by, and the confidential intellectual property of ei3 Corporation. It is subject to ei3 terms and conditions, and applicable laws and regulations. It may only be used with the ei3 managed secure network, by approval of ei3.

**Need help? Contact us.**  
**Phone:** 201-802-9080  
**Email:** [e-services@ei3.com](mailto:e-services@ei3.com)

## LED Meanings

On the left side of the front panel are LEDs labeled PWR (power), A1, and A2.

On the right side are LEDs labeled WD, REL, and A3.

**Power LED:** The green Power LED indicates that the Amphion has power. If it is off, then the device is not being powered.

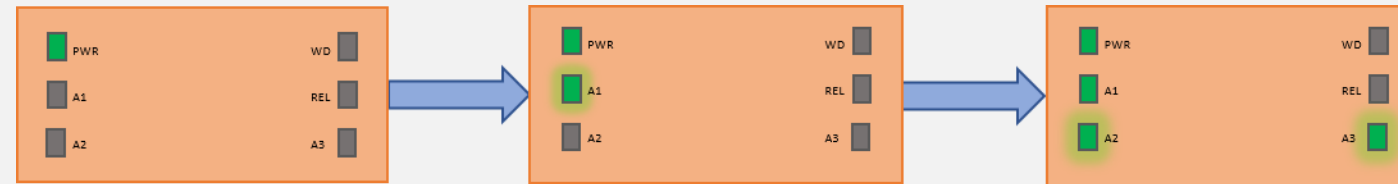
**A1 LED:** This LED represents the status of the device. When the A14-K has completed booting, this light will flash once per second.

**A2 and A3 LEDs:** These lights show that a VPN Tunnel has been established to the ei<sup>3</sup> network. If one or more of these lights are on, it indicates that the Amphion has a stable VPN connection to the Internet.



## LED Patterns

### A14-K Normal Boot-Up

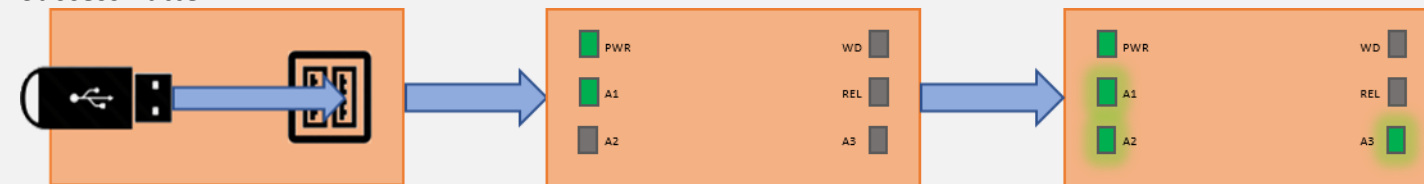


The Power light is always on while power is applied. After initial boot-up (20-30 seconds), the A1 light will flash green once per second. When connection to ei<sup>3</sup> is established (time varies depending on network connection), the A2 and A3 lights will flash green at the same time, once per second.

### Configuration Patterns

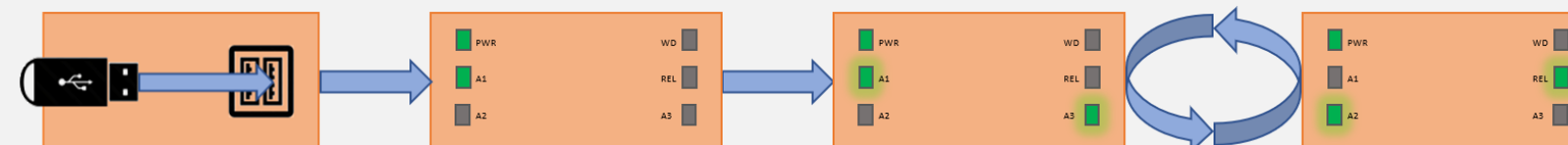
Insert the USB stick with single configuration file in its root directory (file name should end with “.ei3”). After about 20 seconds, either the success pattern or the error pattern will display on the LEDs.

#### Success Pattern:



This LED pattern is used to indicate that the configuration has completed successfully (the .ei3 file is accepted). After about 20 seconds, the A1, A2 and A3 lights will start flashing at the same time, twice per second. Upon removal of the USB stick, the A14-K device will reboot itself within 2 minutes, with the new configuration file applied.

#### Error Pattern:



This LED pattern shows that there was a problem during configuration. It usually means that there was an error reading the configuration file from the USB stick (the .ei3 file is rejected or missing). After about 20 seconds, the REL, A1, A2 and A3 lights will start to flash at different times, twice per second. Upon removal of the USB stick, the device will reboot itself within 2 minutes, with no changes. The configuration file will not be applied.

Common causes of failure include a bad USB stick, a corrupt configuration file, or a USB stick with more than one .ei3 files in its storage.

■ - LED on ■ - LED off ■ - LED flashing

## USB Configuration

### Download



Contact your administrator for a configuration file.

### Save



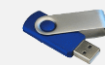
Save the .ei3 file onto an empty FAT 32-formatted USB stick.

### Power On



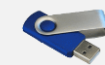
Turn on the Amphion. Wait approximately 30 seconds until the A1 LED flashes on and off. This pattern shows it is up and running.

### Insert USB Stick



Insert a USB stick into the leftmost USB slot. Wait about 20 seconds to see the Success pattern.

### Remove USB Stick



Upon removal of the USB stick, the Amphion A14-K will reboot itself within 2 minutes with the new configuration file applied.

Do not remove power.

### Finished



You have now configured an Amphion!